



ROTAIR®

PORTABLE

COMPRESSORS

SCREW
SUPERSILENT
for civil
engineering

GOMMAIR | DS | MDVN | D | MDVS | VRK | TVR | VRH

GENERAL
CATALOGUE



PRO
SERIES





powerful › compact

DS - K



- › Intuitive starter
Integrated hours counter
Manometer.

- › Thermostat with safety arrest at high temperatures.

- › Airend with optimized profile, max efficiency and operational safety.

- › High efficiency trapezoidal belt-drive, easy to supply and overdimensioned to ensure transmission with less maintenance.

- › Compact design, ideal for installation on service vehicles.

- › Uses the fuel tank and battery of the vehicle to save space.

- › Smallest footprint available.

- › Lowest weight available.

- › All filters readily accessible.

- › Spin-on type, for easier maintenance.

- › Easy to transport and to load / Palletized based.

- › Cooling fan on the engine axle.

Technical Data

dimensions >

L = 900 mm / 35.43"
W = 510 mm / 20.08"
H = 715,5 mm / 28.17"

weight >

142 kg / 313 lbs

DS-K

NEW!

COMPRESSOR

Operating pressure	10 bar - 145 psi
Free air delivery	1150 lt/min - 40 cfm
Minimum working pressure	5,5 bar - 80 psi
Drive system engine-airend	Belt-drive XPZ overdimensioned
Compressor cooling system	Air / Oil
Oil cooling capacity	5 lt - 1.1 UK gal
Air outlet temperature	20°C - 68°F + Ambient temperature
Outlet valves	1 x 3/4"

PETROL ENGINE / ENVIRONMENTAL CONDITIONS

Engine make	HONDA
Engine type	GX 630
Engine system	4 strokes
Emissions	Stage V
Displacement	690 cc
N. cylinders	2
Aspiration	Natural
Max engine power @2500 RPM	15.5 kW - 20.8 HP
Fixed engine speed	2500 RPM
Cooling system	Air
Lubrication system capacity	1,9 lt - 0.42 UK gal
Max ambient temperature	50°C - 122°F
Max altitude	1800 m a.s.l.
Min working temperature	-10°C / 14°F



NEW MODEL

Join To Live EXPERIENCE

- › Fixed RPM
 - › Less components
 - › Easier layout
 - › Highest reliability
- › Start/stop "INTELLIGENT SYSTEM", exclusive from ROTAIR, to prevent the risk of incorrect procedures during specific functioning.
- › Air/oil separator filter, highly oversized, to guarantee an excellent air/oil separation.
- › Single stage oversized air filter for compressor part, to guarantee good filtering of the air intaken by airend.



ROTAIR®



powerful › compact

DS

22 Y



- › Industry leading compact, box-type design.
- › Electro-galvanized bodywork and chassis with advanced painting procedure to grant an excellent preservation through time.
- › Easy Service design for maximum accessibility for ease of maintenance
- › Curbside mounted control panel, adjacent air valves and fluid drains for convenient operation and maximum operator safety.

- › Steel fuel tank, resists cracks, splitting and deformation.
- › Quiet and efficient Yanmar Stage V-NO EPA Tier4 engine, without costly DPF System.
- › Exclusive pneumatic control system, developed by ROTAIR, to adjust automatically engine revs, depending on the air to be delivered. This system is highly reliable and ensures fuel consumption saving.
- › Start/Stop "INTELLIGENT SYSTEM", exclusive from ROTAIR, to prevent the risk of incorrect procedures during specific functioning.
- › Lifting hook for crane handling.
- › Palletized, can be handled with forklift from all sides.

Technical Data

dimensions ›

L = 1510 mm / 59.47"

W = 750 mm / 29.53"

H = 862 mm / 33.92"

weight › (with fluids, without fuel)

405 kg / 893 lbs

DS 22 Y


NEW!

COMPRESSOR

Operating pressure	7 bar - 102 psi
Free air delivery	2100 lt/min - 74 cfm
Minimum working pressure	5 bar - 73 psi
Drive system engine-arend	Belt
Compressor cooling system	Air / Oil
Oil cooling capacity	5,5 lt - 1.21 UK gal
Air outlet temperature	40°C - 72°F + Ambient temperature
Outlet valves	1 x 3/4"
Battery capacity	12V cc - 55 Ah - 270 A
Fuel tank capacity	28 lt - 6.16 UK gal
Consumes	4,1 lt/h - 0.9 UK gal/h at maximum power (2,6 lt/h - 0.57 UK gal/h @ 60%)

DIESEL ENGINE / ENVIRONMENTAL CONDITIONS

Engine make	YANMAR
Engine type	3TN V70
Engine system	4 strokes - Inline - Indirect Injection
Emissions	Stage V / NO EPA Tier 4
Displacement	0,854 cc
N. cylinders	3
Aspiration	Natural
Max engine power @3600 RPM	17 kW
Max engine speed	3600 RPM
Min engine speed	1900 RPM
Cooling system	Water
Cooling system capacity	4 lt - 0.88 UK gal.
Lubrication system	Oil
Lubrication system capacity	3,4 lt - 0.75 UK gal
Max ambient temperature	50°C - 122°F
Max altitude	1800 m a.s.l.
Min working temperature	-10°C / 14°F



**NEW
MODEL
YANMAR
ENGINE**

Join To Live
EXPERIENCE

- › Air/oil separator filter, element inside separator tank, can guarantee an excellent air/oil separation.
- › The air and oil filters of the compressor and the air and oil filters of the engine are independent.
- › Spin-on engine and compressor oil filters for faster and easier maintenance.
- › Single stage oversized air filter for compressor part, to guarantee good filtering of the air intake by airend. Two-stage air filter for engine part.
- › Combined radiator allowing both compressor oil cooling and engine liquid cooling.





powerful > compact

DS

31K-37K



- › Industry leading compact, box-type design.
- › Electro-galvanized bodywork and chassis with advanced painting procedure to grant an excellent preservation through time.
- › Easy Service design for maximum accessibility for ease of maintenance
- › Curbside mounted control panel, adjacent air valves and fluid drains for convenient operation and maximum operator safety.

- › Steel fuel tank, resists cracks, splitting and deformation.
- › Quiet and efficient Kubota Stage 3A engine, without costly DPF System.
- › Exclusive pneumatic control system, developed by ROTAIR, to adjust automatically engine revs, depending on the air to be delivered. This system is highly reliable and ensures fuel consumption saving.
- › Start/Stop "INTELLIGENT SYSTEM", exclusive from ROTAIR, to prevent the risk of incorrect procedures during specific functioning.
- › Lifting hook for crane handling.
- › Palletized, can be handled with forklift from all sides

Technical Data

dimensions >

L = 1650,5 mm / 64.98"
W = 750 mm / 29.53"
H = 865 mm / 34,06"

weight > (with fluids, without fuel)
550 kg / 1213 lbs

DS 31K

dimensions >

L = 1650,5 mm / 64.98"
W = 750 mm / 29.53"
H = 865 mm / 34,06"

weight > (with fluids, without fuel)
550 kg / 1213 lbs

DS 37K

COMPRESSOR

Operating pressure	7 bar - 102 psi
Free air delivery	3000 lt/min - 106 cfm
Minimum working pressure	5 bar - 73 psi
Drive system engine-airend	Direct Drive
Compressor cooling system	Air / Oil
Oil cooling capacity	8 lt - 1.76 UK gal
Air outlet temperature	40°C - 72°F + Ambient temperature
Outlet valves	1 x 3/4"
Battery capacity	12V cc - 74 Ah - 680 A
Fuel tank capacity	50 lt - 11 UK gal
Consumes	4,4 lt/h - 0.97 UK gal/h (11 working hours)

DIESEL ENGINE / ENVIRONMENTAL CONDITIONS

Engine make	KUBOTA
Engine type	V-1505-E3B
Engine system	4 strokes - Inline
Emissions	Stage III A / Tier 4 Interim
Displacement	1498 cc
N. cylinders	4
Aspiration	Natural
Max engine power @3000 RPM	26,2 kW - 35.0 HP
Max engine speed	3000 RPM
Min engine speed	1600 RPM
Cooling system	Water
Cooling system capacity	5 lt - 1.1 UK gal.
Lubrication system	Oil
Lubrication system capacity	6 lt - 1.32 UK gal
Max ambient temperature	50°C - 122°F
Max altitude	1800 m a.s.l.
Min working temperature	-10°C / 14°F

Operating pressure	7 bar - 102 psi
Free air delivery	3600 lt/min - 127 cfm
Minimum working pressure	5 bar - 73 psi
Drive system engine-airend	Direct Drive
Compressor cooling system	Air / Oil
Oil cooling capacity	8 lt - 1.76 UK gal
Air outlet temperature	40°C - 72°F + Ambient temperature
Outlet valves	1 x 3/4"
Battery capacity	12V cc - 74 Ah - 680 A
Fuel tank capacity	50 lt - 11 UK gal
Consumes	4,4 lt/h - 0.97 UK gal/h (11 working hours)

Engine make	KUBOTA
Engine type	V-1505-E3B
Engine system	4 strokes - Inline
Emissions	Stage III A / Tier 4 Interim
Displacement	1498 cc
N. cylinders	4
Aspiration	Natural
Max engine power @3000 RPM	26,2 kW - 35.0 HP
Max engine speed	3000 RPM
Min engine speed	1600 RPM
Cooling system	Water
Cooling system capacity	5 lt - 1.1 UK gal
Lubrication system	Oil
Lubrication system capacity	6 lt - 1.32 UK gal
Max ambient temperature	50°C - 122°F
Max altitude	1800 m a.s.l.
Min working temperature	-10°C / 14°F

- ▶ Air/oil separator filter, element inside separator tank, can guarantee an excellent air/oil separation.
- ▶ The air and oil filters of the compressor and the air and oil filters of the engine are independent.
- ▶ Spin-on engine and compressor oil filters for faster and easier maintenance.
- ▶ Single stage oversized air filter for compressor part, to guarantee good filtering of the air intake by airend. Two-stage air filter for engine part.
- ▶ Combined radiator allowing both compressor oil cooling and engine liquid cooling.



ROTAIR®



powerful › compact

DS

46 K-53 K



- › Industry leading compact, box-type design.
- › Electro-galvanized bodywork and chassis with advanced painting procedure to grant an excellent preservation through time.
- › One-Side Service design with Spin-on oil and separator filters for ease of maintenance
- › Curbside mounted control panel, adjacent air valves and fluid drains for convenient operation and maximum operator safety.

- › Steel fuel tank, resists cracks, splitting and deformation.
- › Quiet and efficient Kubota Stage 3A engine, without costly DPF System.
- › Exclusive pneumatic control system, developed by ROTAIR, to adjust automatically engine revs, depending on the air to be delivered. This system is highly reliable and ensures fuel consumption saving.
- › Start/Stop "INTELLIGENT SYSTEM", exclusive from ROTAIR, to prevent the risk of incorrect procedures during specific functioning.
- › Lifting hook for crane handling.
- › Palletized, can be handled with forklift from all sides

Technical Data

dimensions >

L = 1730 mm / 68.11"
W = 836 mm / 32.91"
H = 1092,5 mm / 43.01"

weight >

890 kg / 1962 lbs

DS 46 K

dimensions >

L = 1730 mm / 68.11"
W = 836 mm / 32.91"
H = 1092,5 mm / 43.01"

weight >

890 kg / 1962 lbs

DS 53 K

COMPRESSOR

Operating pressure	7 bar - 102 psi
Free air delivery	4500 lt/min - 159 cfm
Minimum working pressure	5 bar - 73 psi
Drive system engine-airend	Direct Drive
Compressor cooling system	Air / Oil
Oil cooling capacity	10,7 lt - 2.35 UK gal
Air outlet temperature	40°C - 72°F + Ambient temperature
Outlet valves	2 x 3/4"
Battery capacity	12V cc - 750A-100Ah (EN)
Fuel tank capacity	88 lt - 19.36 UK gal
Consumes	6,7 lt/h - 1.47 UK gal/h (13,15 working hours)

DIESEL ENGINE / ENVIRONMENTAL CONDITIONS

Engine make	KUBOTA
Engine type	V-2403-M-DI
Engine system	4 strokes - Inline - Direct Injection
Emissions	Stage III A / Tier 4 Interim
Displacement	2434 cc
N. cylinders	4
Aspiration	Natural
Max engine power @2700 RPM	36,5 kW - 49.0 HP
Max engine speed	2700 RPM
Min engine speed	1600 RPM
Cooling system	Water
Cooling system capacity	8 lt - 1.76 UK gal
Lubrication system	Oil
Lubrication system capacity	9,5 lt - 2.09 UK gal
Max ambient temperature	50°C - 122°F
Max altitude	1800 m a.s.l.
Min working temperature	-10°C / 14°F

Operating pressure	7 bar - 102 psi
Free air delivery	5200 lt/min - 185 cfm
Minimum working pressure	5 bar - 73 psi
Drive system engine-airend	Direct Drive
Compressor cooling system	Air / Oil
Oil cooling capacity	10,7 lt - 2.35 UK gal
Air outlet temperature	40°C - 72°F + Ambient temperature
Outlet valves	2 x 3/4"
Battery capacity	12V cc - 750A-100Ah (EN)
Fuel tank capacity	88 lt - 19.36 UK gal
Consumes	6,7 lt/h - 1.47 UK gal/h (13,15 working hours)

Engine make	KUBOTA
Engine type	V-2403-M-DI
Engine system	4 strokes - Inline - Direct Injection
Emissions	Stage III A / Tier 4 Interim
Displacement	2434 cc
N. cylinders	4
Aspiration	Natural
Max engine power @2700 RPM	36,5 kW - 49.0 HP
Max engine speed	2700 RPM
Min engine speed	1600 RPM
Cooling system	Water
Cooling system capacity	8 lt - 1.76 UK gal
Lubrication system	Oil
Lubrication system capacity	9,5 lt - 2.09 UK gal
Max ambient temperature	50°C - 122°F
Max altitude	1800 m a.s.l.
Min working temperature	-10°C / 14°F

- › Air/oil separator filter, element inside separator tank, can guarantee an excellent air/oil separation.
- › The air and oil filters of the compressor and the air and oil filters of the engine are independent.
- › Spin-on engine and compressor oil filters for faster and easier maintenance.
- › Single stage oversized air filter for compressor part, to guarantee good filtering of the air intake by airend. Two-stage air filter for engine part.
- › Combined radiator allowing both compressor oil cooling and engine liquid cooling.





powerful › compact

DS

53 Y



- › Industry leading compact, box-type design.
- › Electro-galvanized bodywork and chassis with advanced painting procedure to grant an excellent preservation through time.
- › Easy Service design for maximum accessibility for ease of maintenance
- › Curbside mounted control panel, adjacent air valves and fluid drains for convenient operation and maximum operator safety.
- › Steel fuel tank, resists cracks, splitting and deformation.
- › Quiet and efficient Yanmar Tier 2 engine, without costly DPF System.
- › Exclusive pneumatic control system, developed by ROTAIR, to adjust automatically engine revs, depending on the air to be delivered. This system is highly reliable and ensures fuel consumption saving.
- › Start/Stop "INTELLIGENT SYSTEM", exclusive from ROTAIR, to prevent the risk of incorrect procedures during specific functioning.
- › Lifting hook for crane handling.
- › Palletized, can be handled with forklift from all sides

Technical Data

dimensions ›

L = 1730 mm / 68.11"

W = 836 mm / 32.91"

H = 1092 mm / 43.01"

weight › (with fluids, without fuel)

890 kg / 1962 lbs

DS 53 Y


NEW!

COMPRESSOR

Operating pressure	7 bar - 102 psi
Free air delivery	5200 lt/min - 185 cfm
Minimum working pressure	5 bar - 73 psi
Drive system engine-airend	Direct Drive
Compressor cooling system	Air / Oil
Oil cooling capacity	9 lt - 1.98 UK gal
Air outlet temperature	40°C - 72°F + Ambient temperature
Outlet valves	2 x 3/4"
Battery capacity	12V - 640 A-80Ah (EN)
Fuel tank capacity	85 lt - 18.7 UK gal
Consumes	6,7 lt/h - 1.47 UK gal/h (13,5 working hours)

DIESEL ENGINE / ENVIRONMENTAL CONDITIONS

Engine make	YANMAR
Engine type	4TN V88
Engine system	4 strokes - Inline - Indirect Injection
Emissions	Stage III A / Tier 2
Displacement	2190 cc
N. cylinders	7
Aspiration	Natural
Max engine power @3000 RPM	35,4 kW - 48.1 HP
Max engine speed	3000 RPM
Min engine speed	1500 RPM
Cooling system	Water
Cooling system capacity	8 lt - 1.76 UK gal.
Lubrication system	Oil
Lubrication system capacity	7 lt - 1.54 UK gal
Max ambient temperature	50°C - 122°F
Max altitude	1800 m a.s.l.
Min working temperature	-10°C / 14°F



**NEW
MODEL
YANMAR
ENGINE**

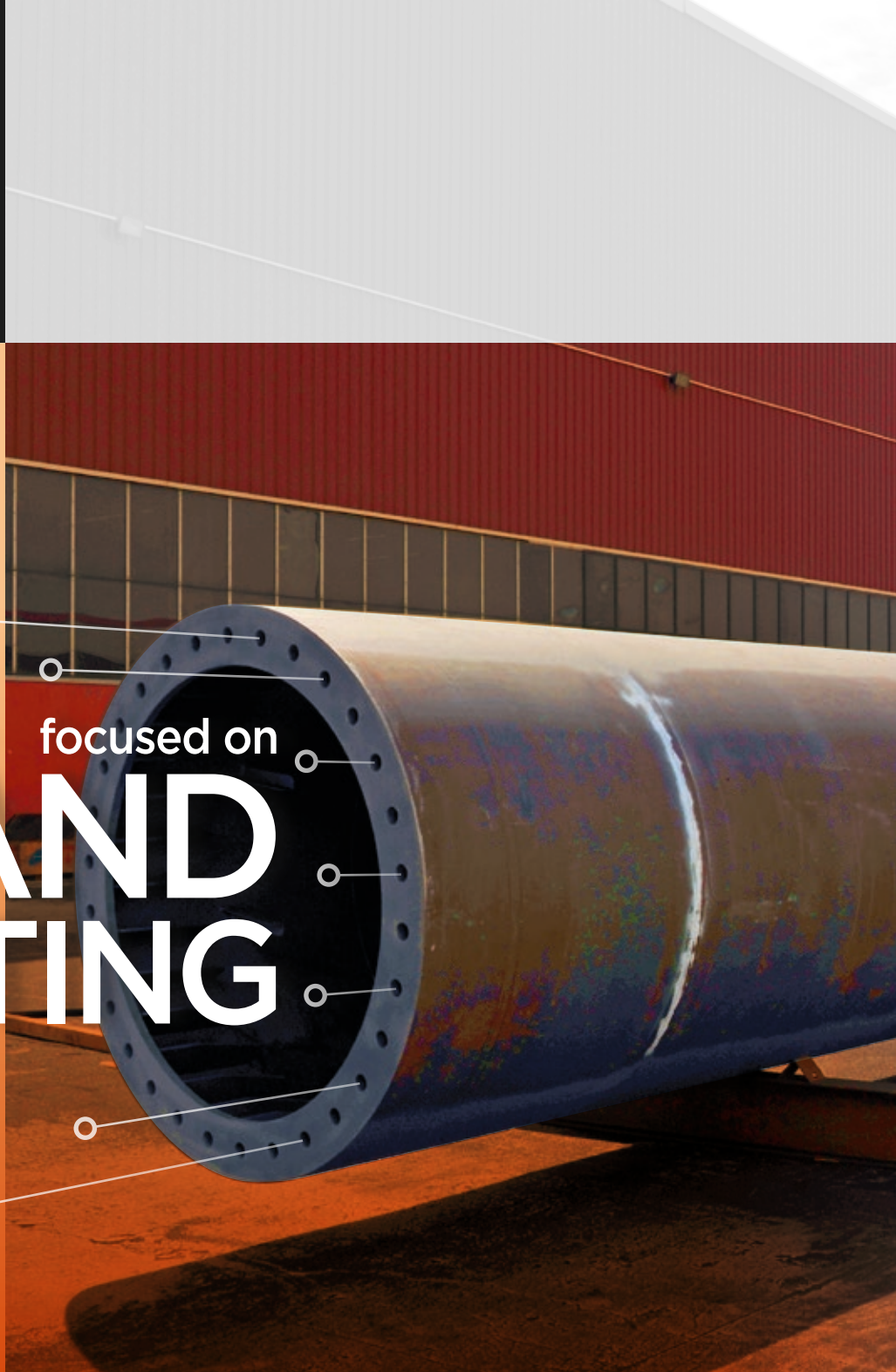
Join To Live
EXPERIENCE

- › Air/oil separator filter, element inside separator tank, can guarantee an excellent air/oil separation.
- › The air and oil filters of the compressor and the air and oil filters of the engine are independent.
- › Spin-on engine and compressor oil filters for faster and easier maintenance.
- › Single stage oversized air filter for compressor part, to guarantee good filtering of the air intake by airend. Two-stage air filter for engine part.
- › Combined radiator allowing both compressor oil cooling and engine liquid cooling.



we are focused on

SAND BLASTING MODE



AFTER COOLED SANDBLASTING

All models of **ROTAIR** compressors have specific aftercooled versions.

They feature an additional cooler to cool down compressed air and a specific condensate separator, that drains the water produced by the thermic exchange of the cooler.

This gives a cooler output of compressed air (ambient $+12 \pm 2^{\circ}\text{C}$) and significantly lowers the humidity of the air, although not removing completely the moisture from air, as this depends mainly on the environmental conditions.

INBUILT ADDITIONAL COOLER AND SPECIFIC CONDENSATE SEPARATOR

for cool and dry air

specifically
designed for...



The aftercooled versions are called "**SANDBLASTING**" because the main use of these machines finds its operation in the sandblasting sector. These machines are indicated for all operations that are sensitive to humidity of the air output: optic fibre laying, use of pneumatic tools that are sensitive to humidity. **ROTAIR** also offers an **EXTERNAL "BS" AFTER-COOLER SYSTEM**, easy to connect through an air pipe kit and is electrically powered by the compressor.

It enables standard compressors, from 2000 to 8500 lt/min (71 to 300 cfm) to work in sandblasting and other humidity-sensitive operations. Air output temperature is extremely low: ambient +2°C. Humidity in air suffers a drastic diminution. The unit is on wheels, easy to transport and to handle, built to meet the most exigent and severe working conditions.

ROTAIR OFFERS A BROAD PANEL OF TRAILERS, TO MAKE COMPRESSORS EFFECTIVELY PORTABLE.

The undercarriage of a portable compressor is composed of:

AXLE

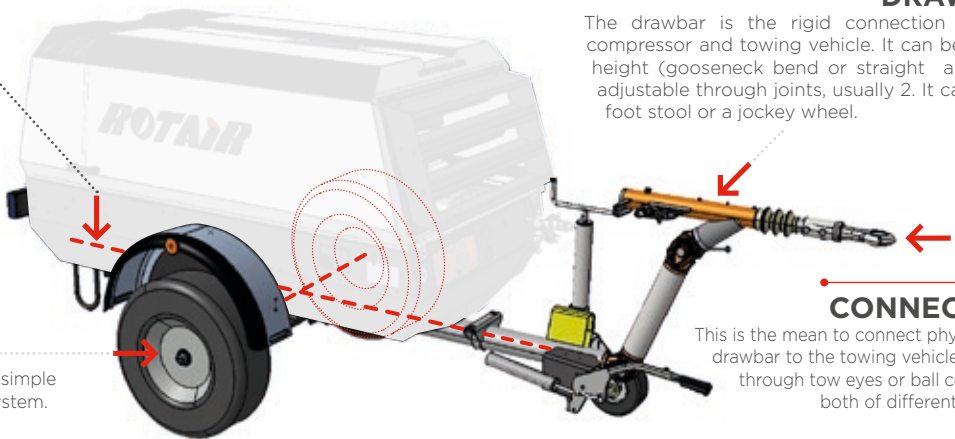
The part connecting compressor to the ground, includes suspension system, wheels and all related parts. Suspensions can be assured with springs (sprung axle) or leaf springs (leaf spring axle). Wheels are of different size, to match the weight of the machine and according to the type of towing.

LIGHTS

System of rear lights and reflectors

BRAKING SYSTEMS

Can be with no braking system at all, simple parking brake or repulsion braking system.



DRAWBAR

The drawbar is the rigid connection between compressor and towing vehicle. It can be at fixed height (gooseneck bend or straight angles) or adjustable through joints, usually 2. It can have a foot stool or a jockey wheel.

CONNECTION

This is the mean to connect physically the drawbar to the towing vehicle. It can be through tow eyes or ball connection, both of different diameter.

STANDARD TRAILER - MDVN

So-called "gooseneck" for the peculiar shape of the drawbar. Is always without brakes. Enables slow towing (max 25 km/h) on work field but not on public roads.

TRAILER WITH BRAKES - MDVN

Has adjustable drawbar, repulsive braking system, lights. Enables compressor to be towed on public roads, if homologated.

STANDARD TRAILER - MDVS

Has adjustable drawbar. Is without repulsive braking system, but has a parking brake. Enables slow towing (max 25 km/h) on work field but not on public roads.

TRAILER WITH BRAKES - MDVS

Has adjustable drawbar, repulsive braking system, lights. Enables compressor to be towed on public roads, if homologated.

TRAILER WITH PARKING BRAKE

All types of axles and drawbars can be equipped with parking brake, a lever that blocks the wheels when the machine must be static.

SKID ADAPTOR

Portable compressors can be delivered "ON SKID", which means without wheels but on a base with four support feet.

ROTAIR has a special SKID ADAPTOR, used to prepare the machine for standard skid delivery, that can be provided as separate attachment and be used to transform a towable compressor into a skid compressor. Viceversa: by removing the skid adaptor and installing an undercarriage with all its parts, the original skid machine can become towable.



ON ROAD HOMOLOGATION / To circulate on public roads, towed by a vehicle, a portable compressor needs to have several characteristics.

EUROPE:

European Union has uniformed the legislation to enable towing of trailers, among those portable compressors. To be towed on public roads, a trailer shall respond to Directive 2007/46/CE. The manufacturer shall undergo a process of internal homologation by one European Ministry of transports and all machines to be towed shall be examined and approved. The exam includes the presence of all elements requested by the Directive (among others: braking system where needed, lights, reflectors, etc...). This done, the manufacturer will be issued, for each towable model, a unique reference number, that will be engraved on the chassis of the machines deemed to be towed and integrated into the specific documentation of the machine. This number, communicated by the end Customer to the Office of Circulation of the European Country where the machine will be put into operation, will enable the road homologation process without need of further presentation of documents or physical inspection and assessment by the competent Authority.

OTHER COUNTRIES.

For other Countries outside Europe, the local legislation shall be followed. ROTAIR can provide, upon request, the specific documents and drawings that could be requested for a national road homologation. The Dealer or end Customer shall provide the specifications that the machines shall respect to be homologated. In some cases, the Dealer could modify the machines, upon authorization of ROTAIR, to conform them to the norms of the reference Country.

FEATURED HIGHLIGHTS

EXCLUSIVE ROTAIR INTELLIGENT SYSTEM

THE "INTELLIGENT SYSTEM" ENABLES A PRE-HEATING OF THE ENGINE WITHOUT OVERLOADING IT, THE AIREND WILL START WORKING ONLY WHEN THE PERFECT CONDITIONS ARE REACHED.

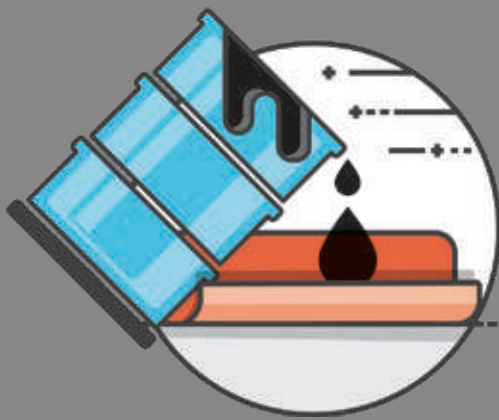
THE SAME IN TURNING OFF THE MACHINE AFTER A DEPRESSURISATION PHASE OF THE HYDRAULIC CIRCUIT, NO HAMMERING OF THE AIREND DUE TO ITS INERTIAL MOVEMENT, BUT A GRADUAL TURN-OFF.



No more need to start the machine with the air exit open (and risks of forgetting it)

All this brings:

- A correct lubrication to the screw set and the engine, even in extremely cold temperature conditions.
- A better functioning and a higher durability of all the components of the machine.
- An increase of the separator filter lifetime and no oil in the air during the next compressor's starts (and no black smoke from the exhausts pipe while turning the machine on).



BUNDED CHASSIS ADAPTER

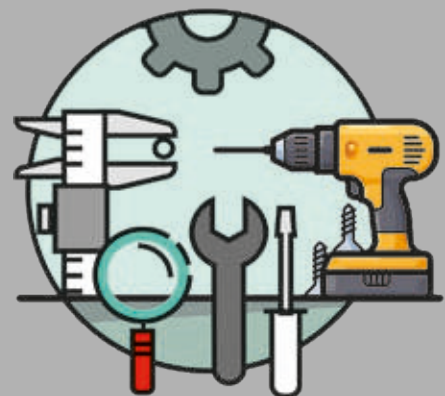
This exclusive device, only for ROTAIR portable compressors, offers the possibility to have your compressor protected from accidental spills of fluids on the ground.

Removable yet solidly fixable to the compressor, it is the ultimate option where anti-spill is mandatorily required.

It is so intelligent that it enables forklift handling of the compressor.

EASY MAINTENANCE

FULL ACCESSIBILITY
FOR EASY AND RAPID
MAINTENANCE AND
SERVICE



PORTABLE



COMPRESSORS

**WARRANTY,
DURATION and
RELIABILITY**

are assured with
THE EXCLUSIVE USE
of original spare parts.





PORTABLE



COMPRESSORS

**SCREW
SUPERSILENT**
for civil
engineering
&
MUCH MORE



ROTAIR®

VIA BERNEZZO, 67
12023 ▶ CARAGLIO (CN) ▶ ITALY



Tel: +39 0171.619676
Fax: +39 0171.619677



www.rotairspa.com
info@rotairspa.com

Company certified
ISO 9001:2015

ISO 9001
BUREAU VERITAS
Certification



ROTAIR - A brand of ELGI Equipments Ltd.