



ROTAIR®

PORTABLE COMPRESSORS

GOMMAIR | DS | MDVN | D | MDVS | VRK | TVR | VRH

GENERAL CATALOGUE



**SCREW
SUPERSILENT**
for civil
engineering

PRO
SERIES



powerful > compact

VRK**FIBRA**
FIBRA^{PLUS}

FROM MOTORWAYS TO DIGITAL
HIGHWAYS, COMPRESSED AIR HAS
ALWAYS PLAYED A LEADING ROLE
IN BUILDING THE NEXT FUTURE

COMPACT DESIGN, EXTREMELY
MANEUVERABLE AND EASY
ACCESS FOR MAINTENANCE.
ALL FILTERS READILY ACCESSIBLE.

ONE SINGLE, COMPACT,
EASY TO TRANSPORT AND
MANEUVERABLE MACHINE,
IMMEDIATELY READY TO WORK.

- › All moving parts are inaccessible, according to the most stringent safety norms.
- › Cooling ventilator shielded and inaccessible.
- › Muffler under the machine, less noise and avoids risks of accidental burns.
- › Cooling fan on the engine axle.
- › Easy to lift & transport.
- › Lifting eye for crane use / Solid-type wheels / Skid version available on option
- › Double-stage air/oil separation
Lowest oil in air for this category: ≤ 1 PPM!
- › Air cooling and drying integrated in the unit.
- › System for proportional acceleration at air demand:
 - › Less noise and consumption
 - › Power all declinated to air flow
- › Petrol tank in sight & extractable for practical refuelling
- › All filters are spin-on / bayonet-type, for faster change
- › Intuitive starter/Integrated hours counter/Manometer/Thermostat with safety arrest @ high temperatures
- › Start/Stop @ low pressures:
 - › Automatically activated when starting the machine
 - › Brings machine to 2 bar
 - › Prevents separator filter to collapse due to difference pressure
 - › Longer life of machine and components
 - › Avoids oil in line
 - › Better start in cold temperatures.
- › Oversized single cooler for extra cooling of air (FIBRA)
Separated second cooler and fan, for extreme cool air output (FIBRA PLUS).
- › Condensates separator

Technical Data

dimensions ›

L = 1168 mm / 45.98"
W = 774 mm / 30.47"
H = 955 mm / 37.6"

weight ›

250 kg / 551 lbs

**VRK
FIBRA**

dimensions ›

L = 1268 mm / 49.94"
W = 774 mm / 30.47"
H = 955 mm / 37.6"

weight ›

260 kg / 573 lbs

**VRK
FIBRA PLUS**

**INTEGRATED
COOLING AND
DRYING SYSTEMS**

COMPRESSOR

Max operation pressure	15 bar - 218 psi
Free Air Delivery	1000 l/min - 35 cfm
Minimum working pressure	5,5 bar - 80 psi
Drive system engine-aiend	Belt-drive XPZ overdimensioned
Compressor cooling system	Air / Oil
Oil cooling capacity	5 lt - 1.1 UK gal
Outlet valves	1 x 3/4"
Noise level EECno 2000/14	< 97 LWA
Battery capacity	12V cc - 300A-30Ah (EN)
Fuel tank capacity	15 lt - 3.3 UK gal

PETROL ENGINE

Engine make	HONDA
Engine type	GX690
Engine system	4 strokes
Emissions	Stage V
Displacement	690 cc
N. cylinders	2
Aspiration	Natural
Max engine power @3600 RPM	16.5 kW - 22.5 HP
Max engine speed	3400 RPM
Min engine speed	2000 RPM
Cooling system	Air
Lubrication system	Oil
Lubrication system capacity	1,9 lt - 0.42 UK gal

QUALITY OF AIR

Oil in air	≤ 1 PPM
Compressed air temperature	Ambient +20°C +36°F (FIBRA) Ambient +0°C/+2°C +0°F/+3,6°F (FIBRA PLUS)

ENVIRONMENTAL CONDITIONS

Max altitude	1800 m a.s.l.
Min / Max working temperature	-10°C / +50°C 14°F / 122°F

- › High efficiency trapezoidal belt-drive, over-dimensioned to ensure transmission with less maintenance.
- › Pneumatic control system, ROTAIR production, to automatically adjust engine revs, depending on the air to be delivered. This system is highly reliable and ensures fuel consumption savings.
- › Automatic depressurization at the end of the work cycle.
- › Separator tank with double air/oil separation-internal filter and external spin-on: oil carry-over ≤ 1 PPM.
- › Air/oil separator filter, highly oversized, to guarantee an excellent air/oil separation.
- › Compressor air filter and engine air filter are separated.
- › Single stage oversized air filter for compression circuit, to guarantee good filtering of the air intaken by airend.

ROTAIR®

SPECIAL FIBRE OPTIC

CONCEIVED FOR
FIBRE-OPTIC
CABLE LAYING





VRK

powerful › compact

16 › 22



COMPRESSOR

Working pressure

Free air delivery

Minimum working pressure

Drive system engine-arend

Compressor cooling system

Oil cooling capacity

Air outlet temperature

Outlet valves

Noise level EECno 2000/14

Battery capacity

Fuel tank capacity

PETROL ENGINE

Engine make

Engine type

Engine system

Emissions

Displacement

N. cylinders

Aspiration

Max engine power @3600 RPM

Max engine speed

Min engine speed

Cooling system

Lubrication system

Lubrication system capacity

Min › Max working temperature

Max Altitude

- › Compact design, extremely maneuverable and easy access for maintenance.
- › All filters readily accessible.
- › All filters (except air filter) are spin-on type, for easier maintenance.
- › All moving parts are inaccessible, according to the most stringent safety norms.
- › Easy to transport and to load.
- › Lifting eye for crane use.

- › Muffler under the machine, less noise and avoids risks of accidental burns.
- › Cooling ventilator shielded and inaccessible.
- › Cooling fan on the engine axle.
- › Intuitive starter / Integrated hours counter / Manometer.
- › Thermostat with safety arrest at high temperatures.
- › Airend with ROTAIR design profile, max efficiency and operational safety.
- › High efficiency trapezoidal belt-drive, easy to supply and over-dimensioned to ensure transmission with less maintenance.

Technical Data

dimensions >

L = 1125 mm / 44.29"

W = 775 mm / 30.5"

H = 1015 mm / 39.94"

weight >

230 kg / 507 lbs

VRK 16»22



NEW!

VRK 16 AE			VRK 20 AE			VRK 22 AE (only outside Europe)		
6 bar 87 psi	11 bar 160 psi	13 bar 188 psi	6 bar 87 psi	11 bar 160 psi	13 bar 188 psi	6 bar 87 psi	11 bar 160 psi	13 bar 188 psi
1600 l/min 57 cfm	1100 l/min 39 cfm	950 l/min 34 cfm	1900 l/min 67 cfm	1250 l/min 44 cfm	1100 l/min 39 cfm	2150 l/min 76 cfm	1500 l/min 53 cfm	1200 l/min 42 cfm
5,5 bar 80 psi	5,5 bar 80 psi	5,5 bar 80 psi	5,5 bar 80 psi	5,5 bar 80 psi	5,5 bar 80 psi	5,5 bar 80 psi	5,5 bar 80 psi	5,5 bar 80 psi

Belt-drive XPZ oversized

Air / Oil

5 lt / 1.1 UK gal



20°C / 68°F + ambient temperature

1 x 3/4"

< 97 LWA

12V cc - 330A-45Ah (EN)

15 lt / 3.3 UK gal

VRK 16 AE 		VRK 20 AE 		VRK 22 AE (only outside Europe)	
HONDA					
GX 630		GX 690			
4 strokes		4 strokes			
Stage V		Stage V		Stage V	
690 cc		690 cc			
2		2			
Natural		Natural			
15.5 kW-20.8 HP		16.5 kW-22.5 HP			
3000 RPM		3000 RPM		3400 RPM	
2000 RPM		2000 RPM			
Air		Air			
Oil		Oil			
1,9 lt / 0.42 UK gal		1,9 lt / 0.42 UK gal			
-10°C › +50°C / 14°F › 122° F					
1800 m a.s.l.					

- › Pneumatic control system, ROTAIR production, to automatically adjust engine revs, depending on the air to be delivered. This system is highly reliable and ensures fuel consumption savings.
- › Encapsulated separator tank with double separation-internal filter and external spin-on: oil carry-over 1-3 PPM
- › Air/oil separator filter, highly oversized, to guarantee an excellent air/oil separation.
- › Compressor oil filter and engine oil filter are separated.
- › Single stage oversized air filter for compressor part, to guarantee good filtering of the air intaken by airend.



we are focused on

SAND BLASTING MODE

Several thin white lines with small open circles at their ends are scattered across the orange background, pointing towards the main text and the image of the pipe.

AFTER COOLED SANDBLASTING

All models of **ROTAIR** compressors have specific aftercooled versions.

They feature an additional cooler to cool down compressed air and a specific condensate separator, that drains the water produced by the thermic exchange of the cooler.

This gives a cooler output of compressed air ($\text{ambient} + 12 \pm 2^{\circ}\text{C}$) and significantly lowers the humidity of the air, although not removing completely the moisture from air, as this depends mainly on the environmental conditions.

INBUILT ADDITIONAL COOLER AND SPECIFIC CONDENSATE SEPARATOR

for cool and dry air



specifically
designed for...

The aftercooled versions are called "**SANDBLASTING**" because the main use of these machines finds its operation in the sandblasting sector. These machines are indicated for all operations that are sensitive to humidity of the air output: optic fibre laying, use of pneumatic tools that are sensitive to humidity. **ROTAIR** also offers an **EXTERNAL "BS" AFTER-COOLER SYSTEM**, easy to connect through an air pipe kit and is electrically powered by the compressor.

It enables standard compressors, from 2000 to 8500 lt/min (71 to 300 cfm) to work in sandblasting and other humidity-sensitive operations. Air output temperature is extremely low: ambient +2°C. Humidity in air suffers a drastic diminution. The unit is on wheels, easy to transport and to handle, built to meet the most exigent and severe working conditions.

ROTAIR OFFERS A BROAD PANEL OF TRAILERS, TO MAKE COMPRESSORS EFFECTIVELY PORTABLE.

The undercarriage of a portable compressor is composed of:

AXLE

The part connecting compressor to the ground, includes suspension system, wheels and all related parts. Suspensions can be assured with springs (sprung axle) or leaf springs (leaf spring axle). Wheels are of different size, to match the weight of the machine and according to the type of towing.

LIGHTS

System of rear lights and reflectors

BRAKING SYSTEMS

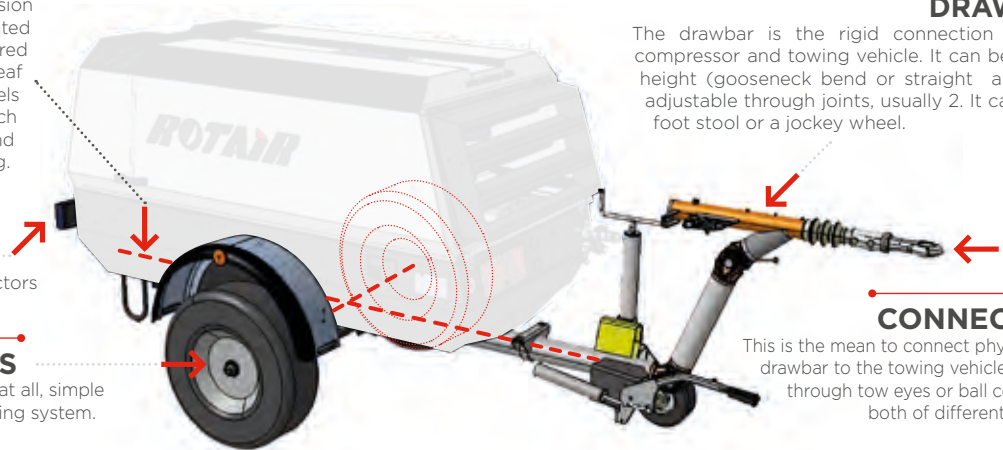
Can be with no braking system at all, simple parking brake or repulsion braking system.

DRAWBAR

The drawbar is the rigid connection between compressor and towing vehicle. It can be at fixed height (gooseneck bend or straight angles) or adjustable through joints, usually 2. It can have a foot stool or a jockey wheel.

CONNECTION

This is the mean to connect physically the drawbar to the towing vehicle. It can be through tow eyes or ball connection, both of different diameter.



STANDARD TRAILER - MDVN

So-called "gooseneck" for the peculiar shape of the drawbar. Is always without brakes. Enables slow towing (max 25 km/h) on work field but not on public roads.

TRAILER WITH BRAKES - MDVN

Has adjustable drawbar, repulsive braking system, lights. Enables compressor to be towed on public roads, if homologated.

STANDARD TRAILER - MDVS

Has adjustable drawbar. Is without repulsive braking system, but has a parking brake. Enables slow towing (max 25 km/h) on work field but not on public roads.

TRAILER WITH BRAKES - MDVS

Has adjustable drawbar, repulsive braking system, lights. Enables compressor to be towed on public roads, if homologated.

TRAILER WITH PARKING BRAKE

All types of axles and drawbars can be equipped with parking brake, a lever that blocks the wheels when the machine must be static.

SKID ADAPTOR

Portable compressors can be delivered "ON SKID", which means without wheels but on a base with four support feet.

ROTAIR has a special **SKID ADAPTOR**, used to prepare the machine for standard skid delivery, that can be provided as separate attachment and be used to transform a towable compressor into a skid compressor. Viceversa: by removing the skid adaptor and installing an undercarriage with all its parts, the original skid machine can become towable.



ON ROAD HOMOLOGATION / To circulate on public roads, towed by a vehicle, a portable compressor needs to have several characteristics.

EUROPE:

European Union has uniformed the legislation to enable towing of trailers, among those portable compressors. To be towed on public roads, a trailer shall respond to Directive 2007/46/CE. The manufacturer shall undergo a process of internal homologation by one European Ministry of transports and all machines to be towed shall be examined and approved. The exam includes the presence of all elements requested by the Directive (among others: braking system where needed, lights, reflectors, etc...). This done, the manufacturer will be issued, for each towable model, a unique reference number, that will be engraved on the chassis of the machines deemed to be towed and integrated into the specific documentation of the machine. This number, communicated by the end Customer to the Office of Circulation of the European Country where the machine will be put into operation, will enable the road homologation process without need of further presentation of documents or physical inspection and assessment by the competent Authority.

OTHER COUNTRIES.

For other Countries outside Europe, the local legislation shall be followed. ROTAIR can provide, upon request, the specific documents and drawings that could be requested for a national road homologation. The Dealer or end Customer shall provide the specifications that the machines shall respect to be homologated. In some cases, the Dealer could modify the machines, upon authorization of ROTAIR, to conform them to the norms of the reference Country.

FEATURED HIGHLIGHTS

EXCLUSIVE ROTAIR INTELLIGENT SYSTEM

THE “**INTELLIGENT SYSTEM**” ENABLES A PRE-HEATING OF THE ENGINE WITHOUT OVERLOADING IT, THE AIREND WILL START WORKING ONLY WHEN THE PERFECT CONDITIONS ARE REACHED.

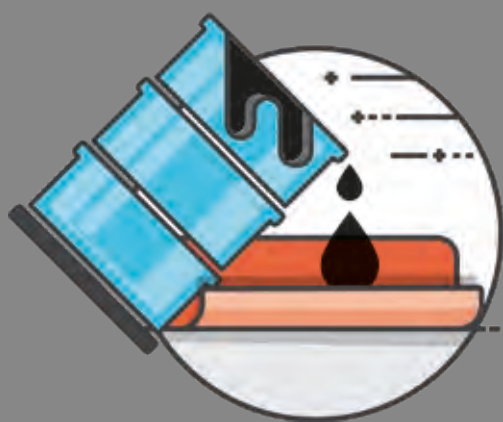
THE SAME IN TURNING OFF THE MACHINE AFTER A DEPRESSURISATION PHASE OF THE HYDRAULIC CIRCUIT, NO HAMMERING OF THE AIREND DUE TO ITS INERTIAL MOVEMENT, BUT A GRADUAL TURN-OFF.



No more need to start the machine with the air exit open (and risks of forgetting it)

All this brings:

- A correct lubrication to the screw set and the engine, even in extremely cold temperature conditions.
- A better functioning and a higher durability of all the components of the machine.
- An increase of the separator filter lifetime and no oil in the air during the next compressor's starts (and no black smoke from the exhausts pipe while turning the machine on).



BUNDED CHASSIS ADAPTER

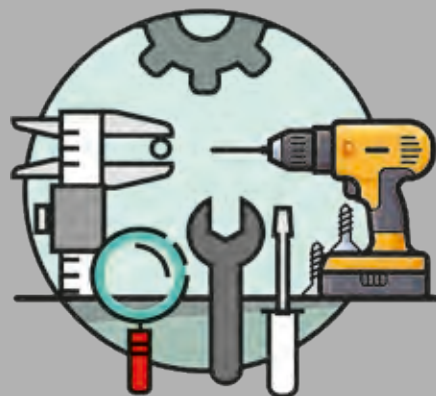
This exclusive device, only for ROTAIR portable compressors, offers the possibility to have your compressor protected from accidental spills of fluids on the ground.

Removable yet solidly fixable to the compressor, it is the ultimate option where anti-spill is mandatorily required.

It is so intelligent that it enables forklift handling of the compressor.

EASY MAINTENANCE

FULL ACCESSIBILITY
FOR EASY AND RAPID
MAINTENANCE AND
SERVICE



PORTABLE

COMPRESSORS



**WARRANTY,
DURATION and
RELIABILITY**

are assured with
THE EXCLUSIVE USE
of original spare parts.





PORTABLE



COMPRESSORS

**SCREW
SUPERSILENT**
for civil
engineering
&
MUCH MORE



ROTAIR®

VIA BERNEZZO, 67
12023 • CARAGLIO (CN) • ITALY



Tel: +39 0171.619676
Fax: +39 0171.619677



www.rotairspa.com
info@rotairspa.com

Company certified
ISO 9001:2015

ISO 9001

BUREAU VERITAS
Certification



ROTAIR - A brand of ELGi Equipments Ltd.