



ROTAIR®

PORTABLE COMPRESSORS

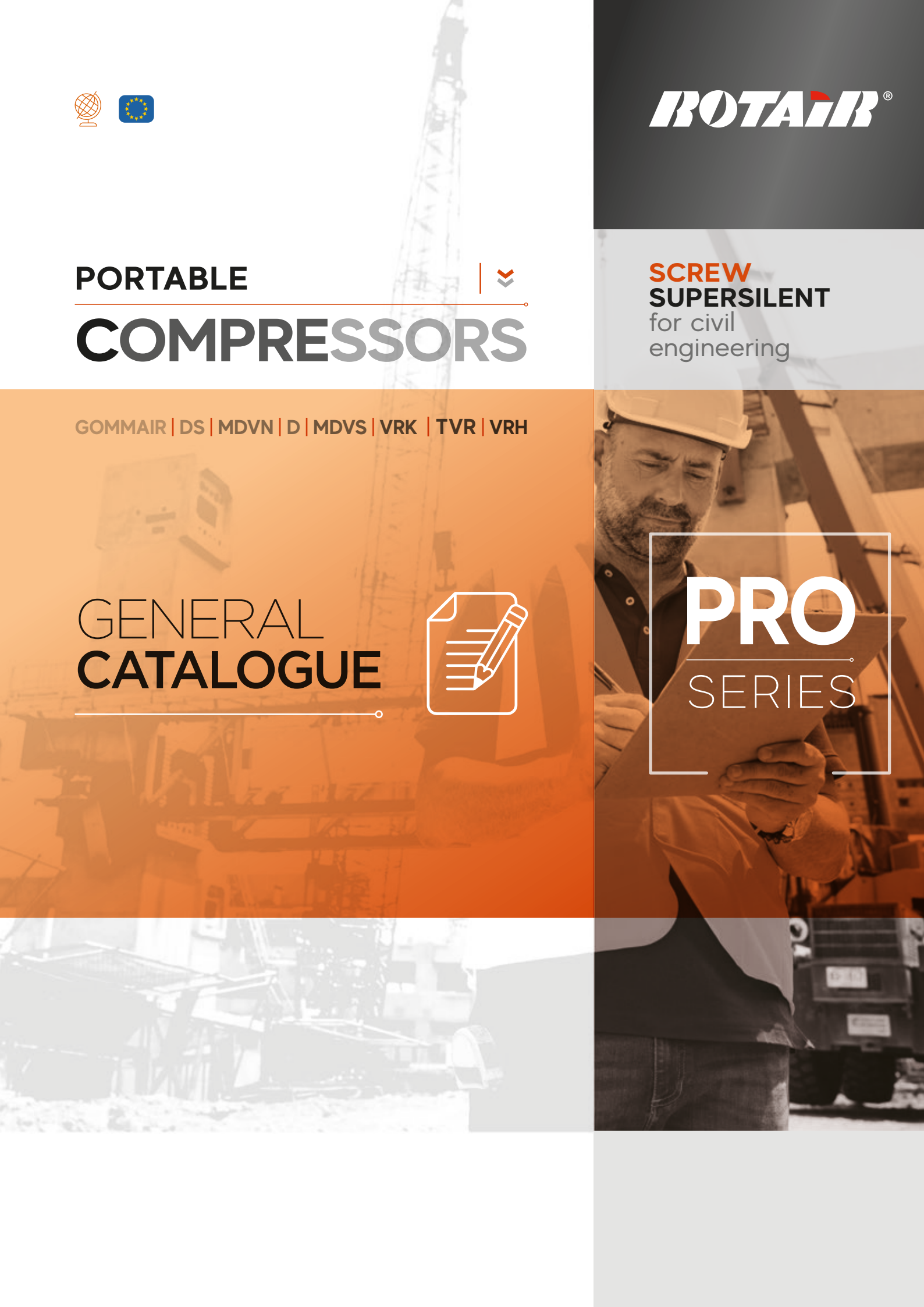
GOMMAIR | DS | MDVN | D | MDVS | VRK | TVR | VRH

GENERAL CATALOGUE



**SCREW
SUPERSILENT**
for civil
engineering

PRO
SERIES



ROTAIR®



powerful › compact

VRH

10»70



- › Screw compressor driven by hydraulic motor usually mounted on excavators and hydraulic operating machines for all necessities of compressed air.
- › Different operating pressures available.
- › Robust, extremely compact and reliable made on purpose to be installed in the shape of carriers - no impact on balance - ground inclination does not matter
- › Clean layout / easy maintenance.
- › Parker hydraulic motors.
- › Electric equipment 12V or 24V.
- › Saving on fuel costs and less maintenance needed.



Technical DATA

	OPERATING PRESSURE	AIR DELIVERY	OIL FLOW	OIL PRESSURE	Dimensions (L x L x H)	WEIGHT
VRH10	8 - 10 - 13 bar 116 -145 - 189 psi	1100 lt/min 39 cfm	from 30 to 60 lt/min from 6 to 13 gpm	from 120 to 205 bar from 1740 to 2973 psi	696 x 810 x 704 mm 27,4 x 31,89 x 27,72 inches	185 kg 407 lbs
VRH15	8 - 10 - 13 bar 116 -145 - 189 psi	1500 lt/min 53 cfm	from 45 to 85 lt/min from 10 to 19 gpm	from 120 to 200 bar from 1740 to 2900 psi	696 x 910 x 704 mm 27,4 x 31,89 x 27,72 inches	185 kg 407 lbs
VRH20	8 - 10 - 13 bar 116 -145 - 189 psi	2000 lt/min 70 cfm	from 60 to 105 lt/min from 13 to 23 gpm	from 105 to 215 bar from 1522 to 3118 psi	696 x 910 x 704 mm 27,4 x 31,89 x 27,72 inches	225 kg 495 lbs
VRH25	8 - 10 - 13 bar 116 -145 - 189 psi	2500 lt/min 88 cfm	from 70 to 120 lt/min from 15 to 26 gpm	from 115 to 240 bar from 1668 to 3480 psi	696 x 910 x 704 mm 27,4 x 31,89 x 27,72 inches	225 kg 495 lbs
VRH30	8 - 10 - 13 bar 116 -145 - 189 psi	3000 lt/min 106 cfm	from 60 to 135 lt/min from 13 to 30 gpm	from 110 to 240 bar from 1595 to 3480 psi	696 x 910 x 704 mm 27,4 x 31,89 x 27,72 inches	225 kg 495 lbs
VRH35	7 - 8 bar 100 -116 psi	3500 lt/min 124 cfm	from 110 to 150 lt/min from 24 to 33 gpm	from 110 to 160 bar from 1595 to 2320 psi	696 x 910 x 704 mm 27,4 x 31,89 x 27,72 inches	225 kg 495 lbs
VRH40	8 - 10 bar 116 -145 psi	4000 lt/min 141 cfm	from 100 to 165 lt/min from 22 to 36 gpm	from 130 to 215 bar from 1885 to 3118 psi	793 x 966 x 874 mm 31,22 x 38 x 34,4 inches	350 kg 770 lbs
VRH50	7 - 8 bar 100 -116 psi	5000 lt/min 177 cfm	from 135 to 180 lt/min from 30 to 40 gpm	from 115 to 190 bar from 1668 to 2755 psi	793 x 966 x 874 mm 31,22 x 38 x 34,4 inches	350 kg 770 lbs
VRH55	7 - 8 bar 100 -116 psi	5500 lt/min 195 cfm	from 135 to 200 lt/min from 30 to 44 gpm	from 120 to 180 bar from 1740 to 2610 psi	793 x 966 x 874 mm 31,22 x 38 x 34,4 inches	350 kg 770 lbs
VRH60	8 - 10 bar 116 -145 psi	6000 lt/min 212 cfm	from 110 to 205 lt/min from 24 to 45 gpm	from 165 a to 235 bar from 2393 to 3408 psi	820 x 1325 x 1057 mm 32,28 x 52,16 x 41,61 inches	660 kg 1452 lbs
VRH70	7 - 8 bar 100 -116 psi	7000 lt/min 247 cfm	from 160 to 215 lt/min from 35 to 45 gpm	from 170 to 215 bar from 2465 to 3118 psi	820 x 1325 x 1057 mm 32,28 x 52,16 x 41,61 inches	660 kg 1452 lbs

hydraulic transmission compressors

we are focused on

SAND BLASTING MODE

AFTER COOLED SANDBLASTING

All models of **ROTAIR** compressors have specific aftercooled versions.

They feature an additional cooler to cool down compressed air and a specific condensate separator, that drains the water produced by the thermic exchange of the cooler.

This gives a cooler output of compressed air (ambient $+12 \pm 2^{\circ}\text{C}$) and significantly lowers the humidity of the air, although not removing completely the moisture from air, as this depends mainly on the environmental conditions.

INBUILT ADDITIONAL COOLER AND SPECIFIC CONDENSATE SEPARATOR

for cool and dry air



specifically
designed **for...**

The aftercooled versions are called "**SANDBLASTING**" because the main use of these machines finds its operation in the sandblasting sector. These machines are indicated for all operations that are sensitive to humidity of the air output: optic fibre laying, use of pneumatic tools that are sensitive to humidity. **ROTAIR** also offers an **EXTERNAL "BS" AFTER-COOLER SYSTEM**, easy to connect through an air pipe kit and is electrically powered by the compressor.

It enables standard compressors, from 2000 to 8500 lt/min (71 to 300 cfm) to work in sandblasting and other humidity-sensitive operations. Air output temperature is extremely low: ambient +2°C. Humidity in air suffers a drastic diminution. The unit is on wheels, easy to transport and to handle, built to meet the most exigent and severe working conditions.

ROTAIR OFFERS A BROAD PANEL OF TRAILERS, TO MAKE COMPRESSORS EFFECTIVELY PORTABLE.

The undercarriage of a portable compressor is composed of:

AXLE

The part connecting compressor to the ground, includes suspension system, wheels and all related parts. Suspensions can be assured with springs (sprung axle) or leaf springs (leaf spring axle). Wheels are of different size, to match the weight of the machine and according to the type of towing.

LIGHTS

System of rear lights and reflectors

BRAKING SYSTEMS

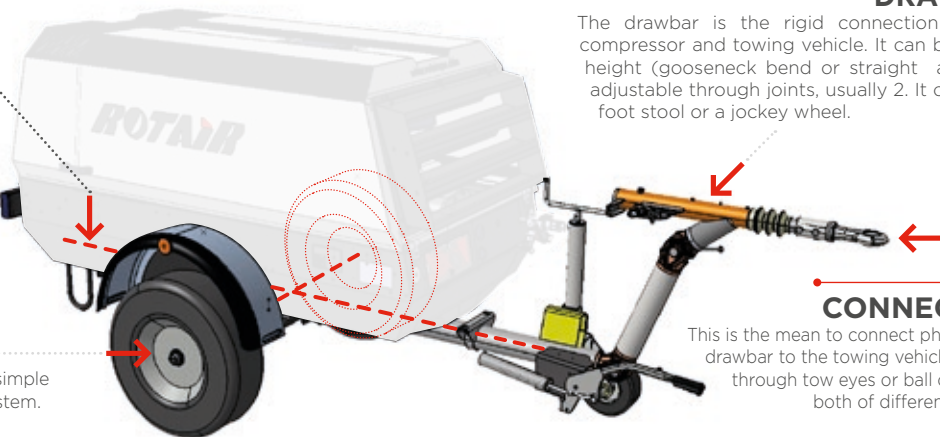
Can be with no braking system at all, simple parking brake or repulsion braking system.

DRAWBAR

The drawbar is the rigid connection between compressor and towing vehicle. It can be at fixed height (gooseneck bend or straight angles) or adjustable through joints, usually 2. It can have a foot stool or a jockey wheel.

CONNECTION

This is the mean to connect physically the drawbar to the towing vehicle. It can be through tow eyes or ball connection, both of different diameter.



STANDARD TRAILER - MDVN

So-called "gooseneck" for the peculiar shape of the drawbar. Is always without brakes. Enables slow towing (max 25 km/h) on work field but not on public roads.

TRAILER WITH BRAKES - MDVN

Has adjustable drawbar, repulsive braking system, lights. Enables compressor to be towed on public roads, if homologated.

STANDARD TRAILER - MDVS

Has adjustable drawbar. Is without repulsive braking system, but has a parking brake. Enables slow towing (max 25 km/h) on work field but not on public roads.

TRAILER WITH BRAKES - MDVS

Has adjustable drawbar, repulsive braking system, lights. Enables compressor to be towed on public roads, if homologated.

TRAILER WITH PARKING BRAKE

All types of axles and drawbars can be equipped with parking brake, a lever that blocks the wheels when the machine must be static.

SKID ADAPTOR

Portable compressors can be delivered "ON SKID", which means without wheels but on a base with four support feet.

ROTAIR has a special **SKID ADAPTOR**, used to prepare the machine for standard skid delivery, that can be provided as separate attachment and be used to transform a towable compressor into a skid compressor. Viceversa: by removing the skid adaptor and installing an undercarriage with all its parts, the original skid machine can become towable.



ON ROAD HOMOLOGATION / To circulate on public roads, towed by a vehicle, a portable compressor needs to have several characteristics.

EUROPE:

European Union has uniformed the legislation to enable towing of trailers, among those portable compressors. To be towed on public roads, a trailer shall respond to Directive 2007/46/CE. The manufacturer shall undergo a process of internal homologation by one European Ministry of transports and all machines to be towed shall be examined and approved. The exam includes the presence of all elements requested by the Directive (among others: braking system where needed, lights, reflectors, etc...). This done, the manufacturer will be issued, for each towable model, a unique reference number, that will be engraved on the chassis of the machines deemed to be towed and integrated into the specific documentation of the machine. This number, communicated by the end Customer to the Office of Circulation of the European Country where the machine will be put into operation, will enable the road homologation process without need of further presentation of documents or physical inspection and assessment by the competent Authority.

OTHER COUNTRIES.

For other Countries outside Europe, the local legislation shall be followed. ROTAIR can provide, upon request, the specific documents and drawings that could be requested for a national road homologation. The Dealer or end Customer shall provide the specifications that the machines shall respect to be homologated. In some cases, the Dealer could modify the machines, upon authorization of ROTAIR, to conform them to the norms of the reference Country.

FEATURED HIGHLIGHTS

EXCLUSIVE ROTAIR INTELLIGENT SYSTEM

THE “**INTELLIGENT SYSTEM**” ENABLES A PRE-HEATING OF THE ENGINE WITHOUT OVERLOADING IT, THE AIREND WILL START WORKING ONLY WHEN THE PERFECT CONDITIONS ARE REACHED.

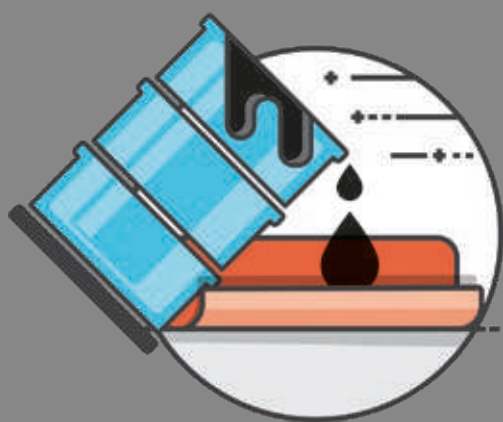
THE SAME IN TURNING OFF THE MACHINE AFTER A DEPRESSURISATION PHASE OF THE HYDRAULIC CIRCUIT, NO HAMMERING OF THE AIREND DUE TO ITS INERTIAL MOVEMENT, BUT A GRADUAL TURN-OFF.



No more need to start the machine with the air exit open (and risks of forgetting it)

All this brings:

- A correct lubrication to the screw set and the engine, even in extremely cold temperature conditions.
- A better functioning and a higher durability of all the components of the machine.
- An increase of the separator filter lifetime and no oil in the air during the next compressor's starts (and no black smoke from the exhausts pipe while turning the machine on).



BUNDED CHASSIS ADAPTER

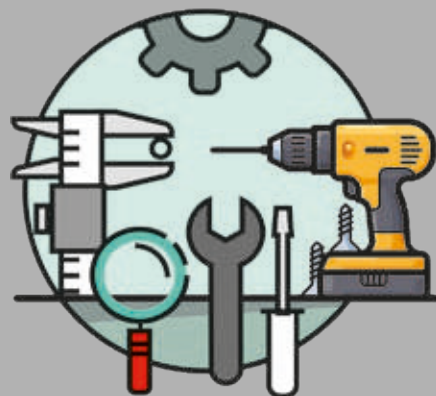
This exclusive device, only for ROTAIR portable compressors, offers the possibility to have your compressor protected from accidental spills of fluids on the ground.

Removable yet solidly fixable to the compressor, it is the ultimate option where anti-spill is mandatorily required.

It is so intelligent that it enables forklift handling of the compressor.

EASY MAINTENANCE

FULL ACCESSIBILITY
FOR EASY AND RAPID
MAINTENANCE AND
SERVICE



PORTABLE

COMPRESSORS



**WARRANTY,
DURATION and
RELIABILITY**

are assured with
THE EXCLUSIVE USE
of original spare parts.





PORTABLE



COMPRESSORS

**SCREW
SUPERSILENT**
for civil
engineering
&
MUCH MORE



ROTAIR®

VIA BERNEZZO, 67
12023 • CARAGLIO (CN) • ITALY



Tel: +39 0171.619676
Fax: +39 0171.619677



www.rotairspa.com
info@rotairspa.com

Company certified
ISO 9001:2015

ISO 9001

BUREAU VERITAS
Certification



ROTAIR - A brand of ELGi Equipments Ltd.