



**ROTAIR®**

# PORTABLE COMPRESSORS

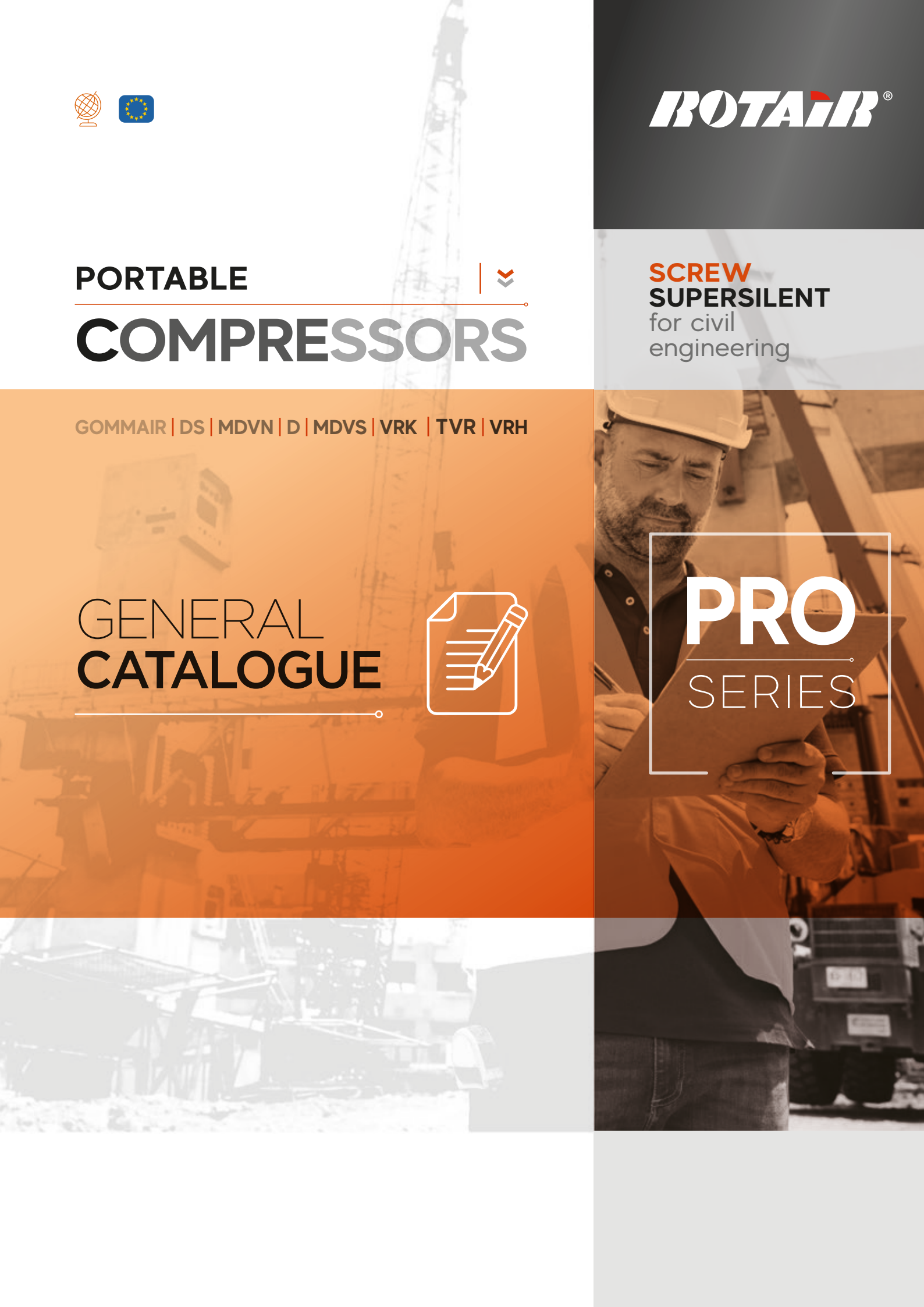
GOMMAIR | DS | MDVN | D | MDVS | VRK | TVR | VRH

## GENERAL CATALOGUE



**SCREW  
SUPERSILENT**  
for civil  
engineering

**PRO**  
SERIES





powerful › compact

# GOMMAIR



- › Industry leading compact, square design
- › Small footprint, no wheels
- › Electro-galvanized bodywork and structure with advanced painting procedure to grant an excellent preservation through time.

- › Easy Service design for maximum accessibility for ease of maintenance.
- › Easy managing with forklift.
- › Quiet and efficient Yanmar Stage V engine.
- › Pressurized oil circuit to ensure efficient oil lubrication.
- › Air/oil separator filter, can guarantee an excellent air/oil separation.
- › Palletized, can be handled with forklift from all sides.

# Technical Data

## dimensions ›

L = 1015 mm / 40.0"

W = 705 mm / 27.7"

H = 980 mm / 38.5"

## weight ›

315 kg / 694 lbs

# GOMMAIR

# DO YOU KNOW

# ?

## COMPRESSOR

Operating pressure	7 bar 100 psi	11 bar 160 psi	13 bar 188 psi
Free air delivery	1100 lt/min 39 cfm	930 lt/min 33 cfm	800 lt/min 28 cfm

## DIESEL ENGINE / ENVIRONMENTAL CONDITIONS

Engine make	YANMAR
Engine type	2TNV70
Emissions	Stage V
Displacement	570 cc
N. cylinders	2
Max engine power @3200 RPM	10,5 kW - 14,3 CV
Max engine speed	3600 RPM
Min engine speed	2000 RPM
Cooling system	Water
Fuel tank capacity	13 lt - 2.86 UK gal
Consumes	3,3 lt/h @ 3600 RPM - 2 lt/h @ 60% 0.73 UK gal @3600 RPM - 0.44 UK gal @60%
Max ambient temperature	50°C - 122°F
Max altitude	1800 m s.n.m.
Min working temperature	-10°C / 14°F

...all our  
ranges



also  
available  
AS...

customized  
**SANDBLASTING  
VERSION**

**INBUILT ADDITIONAL COOLER AND  
SPECIFIC CONDENSATE SEPARATOR**

*for cool and dry air*

- › 1 compressor oil filter.
- › 1 single stage air filter for the compressor part of large size to ensure efficient filtering of air suctioned by the screw unit.
- › Spin-on engine and compressor oil filters for faster and easier maintenance.
- › 1 double stage air filter for the engine.
- › Protective device for engine cold start.
- › Combined radiator allowing both compressor oil cooling and engine liquid cooling.

**ROTAR**





A large, horizontal industrial pipe, possibly for sandblasting, is shown in a workshop or factory setting. The pipe has a flange with many bolt holes at one end. The background shows a red building with windows.

we are focused on

# SAND BLASTING MODE

## AFTER COOLED SANDBLASTING

All models of **ROTAIR** compressors have specific aftercooled versions.

They feature an additional cooler to cool down compressed air and a specific condensate separator, that drains the water produced by the thermic exchange of the cooler.

This gives a cooler output of compressed air (ambient  $+12 \pm 2^{\circ}\text{C}$ ) and significantly lowers the humidity of the air, although not removing completely the moisture from air, as this depends mainly on the environmental conditions.

## INBUILT ADDITIONAL COOLER AND SPECIFIC CONDENSATE SEPARATOR

*for cool and dry air*



specifically  
designed for...

The aftercooled versions are called "**SANDBLASTING**" because the main use of these machines finds its operation in the sandblasting sector. These machines are indicated for all operations that are sensitive to humidity of the air output: optic fibre laying, use of pneumatic tools that are sensitive to humidity. **ROTAIR** also offers an **EXTERNAL "BS" AFTER-COOLER SYSTEM**, easy to connect through an air pipe kit and is electrically powered by the compressor.

It enables standard compressors, from 2000 to 8500 lt/min (71 to 300 cfm) to work in sandblasting and other humidity-sensitive operations. Air output temperature is extremely low: ambient +2°C. Humidity in air suffers a drastic diminution. The unit is on wheels, easy to transport and to handle, built to meet the most exigent and severe working conditions.



## ROTAIR OFFERS A BROAD PANEL OF TRAILERS, TO MAKE COMPRESSORS EFFECTIVELY PORTABLE.

The undercarriage of a portable compressor is composed of:

### AXLE

The part connecting compressor to the ground, includes suspension system, wheels and all related parts. Suspensions can be assured with springs (sprung axle) or leaf springs (leaf spring axle). Wheels are of different size, to match the weight of the machine and according to the type of towing.

### LIGHTS

System of rear lights and reflectors

### BRAKING SYSTEMS

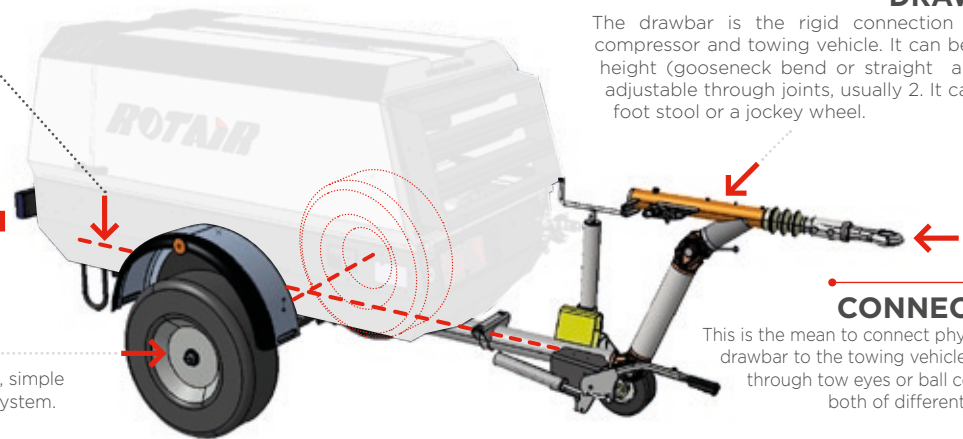
Can be with no braking system at all, simple parking brake or repulsion braking system.

### DRAWBAR

The drawbar is the rigid connection between compressor and towing vehicle. It can be at fixed height (gooseneck bend or straight angles) or adjustable through joints, usually 2. It can have a foot stool or a jockey wheel.

### CONNECTION

This is the mean to connect physically the drawbar to the towing vehicle. It can be through tow eyes or ball connection, both of different diameter.



### STANDARD TRAILER - MDVN

So-called "gooseneck" for the peculiar shape of the drawbar. Is always without brakes. Enables slow towing (max 25 km/h) on work field but not on public roads.

### TRAILER WITH BRAKES - MDVN

Has adjustable drawbar, repulsive braking system, lights. Enables compressor to be towed on public roads, if homologated.

### STANDARD TRAILER - MDVS

Has adjustable drawbar. Is without repulsive braking system, but has a parking brake. Enables slow towing (max 25 km/h) on work field but not on public roads.

### TRAILER WITH BRAKES - MDVS

Has adjustable drawbar, repulsive braking system, lights. Enables compressor to be towed on public roads, if homologated.

### TRAILER WITH PARKING BRAKE

All types of axles and drawbars can be equipped with parking brake, a lever that blocks the wheels when the machine must be static.

### SKID ADAPTOR

Portable compressors can be delivered "ON SKID", which means without wheels but on a base with four support feet.

ROTAIR has a special **SKID ADAPTOR**, used to prepare the machine for standard skid delivery, that can be provided as separate attachment and be used to transform a towable compressor into a skid compressor. Viceversa: by removing the skid adaptor and installing an undercarriage with all its parts, the original skid machine can become towable.



**ON ROAD HOMOLOGATION** / To circulate on public roads, towed by a vehicle, a portable compressor needs to have several characteristics.

### EUROPE:

European Union has uniformed the legislation to enable towing of trailers, among those portable compressors. To be towed on public roads, a trailer shall respond to Directive 2007/46/CE. The manufacturer shall undergo a process of internal homologation by one European Ministry of transports and all machines to be towed shall be examined and approved. The exam includes the presence of all elements requested by the Directive (among others: braking system where needed, lights, reflectors, etc...). This done, the manufacturer will be issued, for each towable model, a unique reference number, that will be engraved on the chassis of the machines deemed to be towed and integrated into the specific documentation of the machine. This number, communicated by the end Customer to the Office of Circulation of the European Country where the machine will be put into operation, will enable the road homologation process without need of further presentation of documents or physical inspection and assessment by the competent Authority.

### OTHER COUNTRIES.

For other Countries outside Europe, the local legislation shall be followed. ROTAIR can provide, upon request, the specific documents and drawings that could be requested for a national road homologation. The Dealer or end Customer shall provide the specifications that the machines shall respect to be homologated. In some cases, the Dealer could modify the machines, upon authorization of ROTAIR, to conform them to the norms of the reference Country.

# FEATURED HIGHLIGHTS

## EXCLUSIVE ROTAIR INTELLIGENT SYSTEM

THE “**INTELLIGENT SYSTEM**” ENABLES A PRE-HEATING OF THE ENGINE WITHOUT OVERLOADING IT, THE AIREND WILL START WORKING ONLY WHEN THE PERFECT CONDITIONS ARE REACHED.

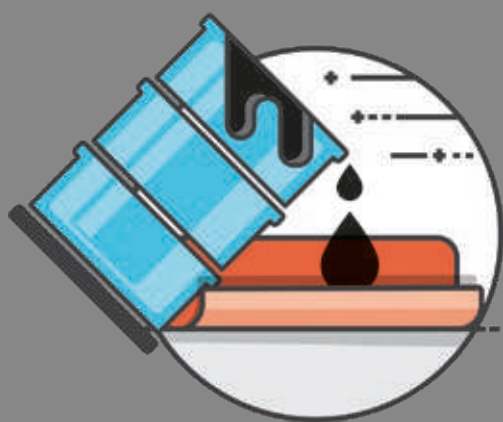
THE SAME IN TURNING OFF THE MACHINE AFTER A DEPRESSURISATION PHASE OF THE HYDRAULIC CIRCUIT, NO HAMMERING OF THE AIREND DUE TO ITS INERTIAL MOVEMENT, BUT A GRADUAL TURN-OFF.



No more need to start the machine with the air exit open (and risks of forgetting it)

All this brings:

- A correct lubrication to the screw set and the engine, even in extremely cold temperature conditions.
- A better functioning and a higher durability of all the components of the machine.
- An increase of the separator filter lifetime and no oil in the air during the next compressor's starts (and no black smoke from the exhausts pipe while turning the machine on).



## BUNDED CHASSIS ADAPTER

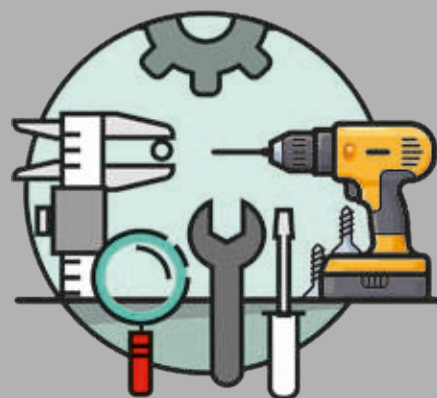
*This exclusive device, only for ROTAIR portable compressors, offers the possibility to have your compressor protected from accidental spills of fluids on the ground.*

*Removable yet solidly fixable to the compressor, it is the ultimate option where anti-spill is mandatorily required.*

*It is so intelligent that it enables forklift handling of the compressor.*

## EASY MAINTENANCE

FULL ACCESSIBILITY  
FOR EASY AND RAPID  
MAINTENANCE AND  
SERVICE



PORTABLE  
**COMPRESSORS**



**WARRANTY,  
DURATION and  
RELIABILITY**

are assured with  
THE EXCLUSIVE USE  
of original spare parts.







PORTABLE



COMPRESSORS

**SCREW  
SUPERSILENT**  
for civil  
engineering  
&  
MUCH MORE



**ROTAIR®**

VIA BERNEZZO, 67  
12023 • CARAGLIO (CN) • ITALY



Tel: +39 0171.619676  
Fax: +39 0171.619677



[www.rotairspa.com](http://www.rotairspa.com)  
[info@rotairspa.com](mailto:info@rotairspa.com)

Company certified  
ISO 9001:2015

ISO 9001

BUREAU VERITAS  
Certification



ROTAIR - A brand of ELGi Equipments Ltd.